

# Traction motors for subway

The uniqueness of the RER offer compared to other manufacturers of electrical equipment for transport includes five "Pros" that render it exceptionally well-suited for your vehicles.

We are the only company in the world specializing exclusively in electrical machines and traction equipment.

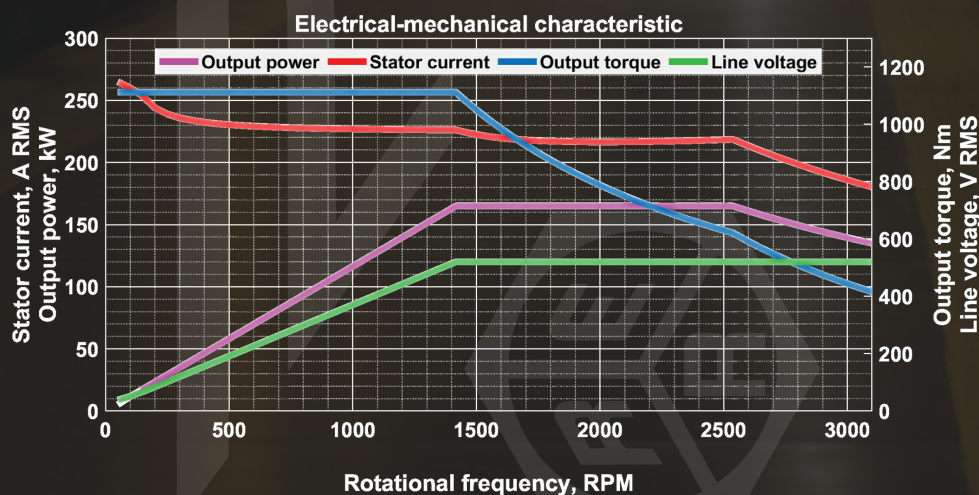
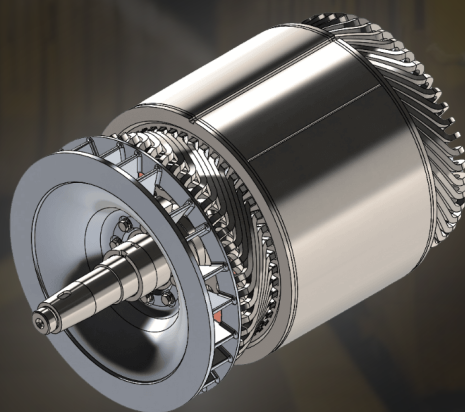
With an impressive 135 years of experience in the electrical industry, our exclusive focus on transportation products instills confidence in our technical solutions and quality assurance.

RER products not only constitute a proven product line but, more importantly, reflect our competence and ability to tailor products to meet the specific requirements of vehicle manufacturers.

RER offers a comprehensive suite of solutions, integrating maximum design efficiency with cutting-edge industrial technologies tailored for rail, urban, and mining vehicles.

By enhancing specific power, and concurrently reducing weight and size indicators for both motor and traction equipment, RER adeptly addresses the challenges of traction, energy capacity, and functionality not only within our products but across the entire vehicle.

**RER creates the right solutions!**



AS "Rīgas  
elektromāšīnbūves rūpnīca"

